



Post Graduate Diploma in Environmental Law and Policy
(July- 2021-2022)

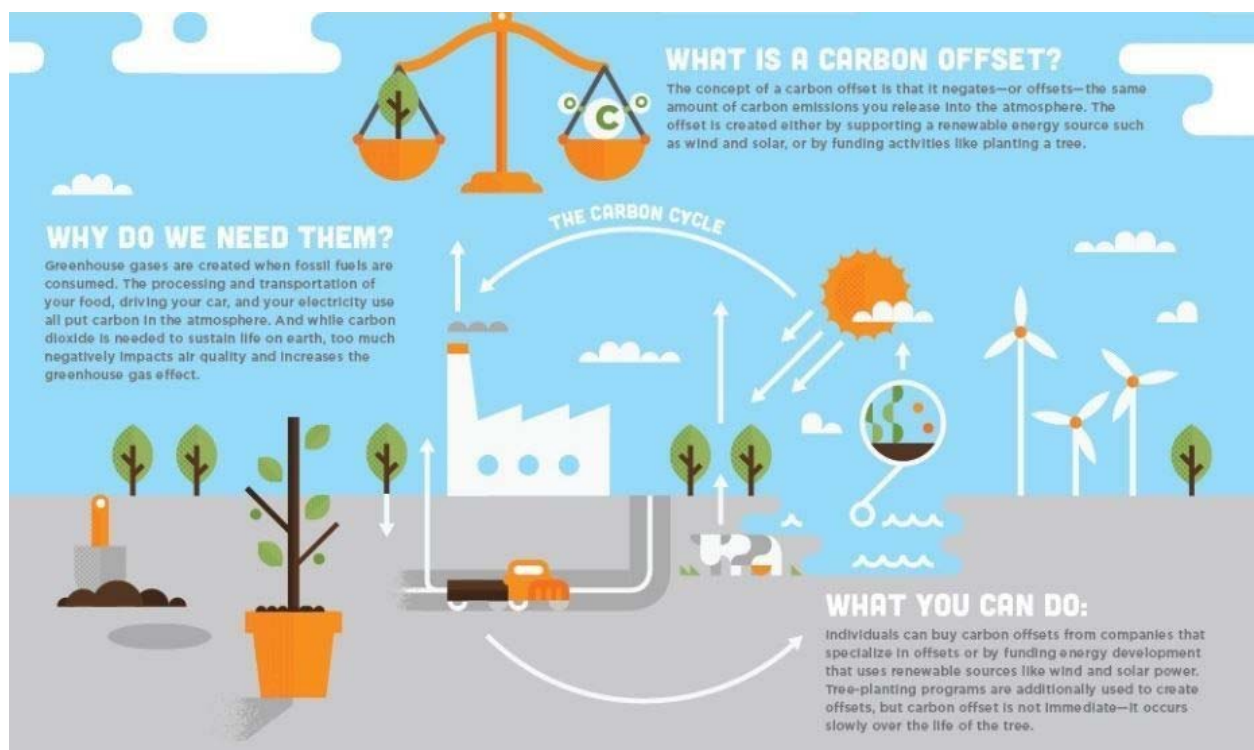
Refer to the timeline for submission date

Total Marks: 50

The world limits and marks allocated to each question are mentioned after the question

Assignment - 1

Question 1:



Picture courtesy: European Sting

What is carbon offsetting and how does it work? Do you think it is an effective way to deal with climate crisis?

(10 marks, 800-1000 words)



Question 2:

Explain the difference between law and policy along with any two examples. Also, comment on India's framework on legal and regulatory framework governing the environment.

(10 marks, 800-1000 words)

Question 3:

In 2015, the 2030 Agenda for Sustainable Development was adopted along with the 17 Sustainable Development Goals (SDGs) and 169 targets. The SDGs represent a concerted global effort in acknowledging the central role of environment in the socioeconomic development. Discuss the effectiveness of SDGs in rendering protection to environment at international and national level.

(10 marks, 800-1000 words)

Question 4:

"The right to a healthy environment is the product of judicial interpretations adding new dimensions to the right of life in art 21 of the Constitution of India. On the other hand, the forty second amendment to the Constitution had imposed a duty on the state and the citizens to protect and improve the environment, by adding art 48A to the directive principles and art 51A(g) as a fundamental duty. These insertions in the Constitution have acted as the foundations for building up environmental jurisprudence in the country." **Briefly discuss the constitutional provisions protecting the environment.**

(10 marks, 800-1000 words)

Question 5:

What do you understand by natural resources? Comment on what do you understand by the public trust doctrine as laid down by the Supreme Court in *M.C.Mehta vs. Kamal Nath*, (1997)1 SCC 388. Do you think this doctrine helps to preserve the natural resources of our country?

(10 marks, 800-1000 words)